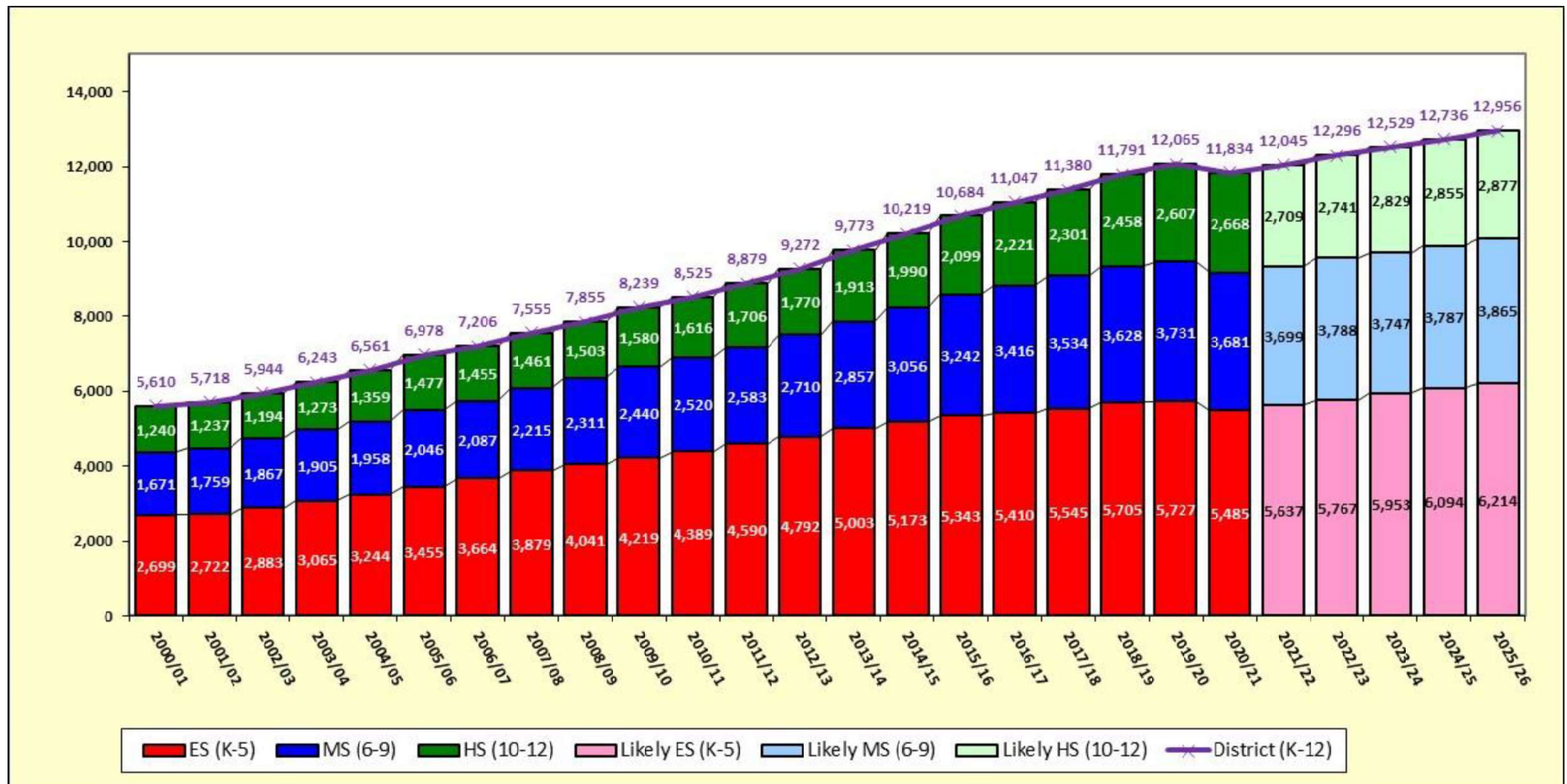


# Projection View



Source: Census Bureau, Polk County, Ankeny Community Schools, and RSP SFM & Demographic Models

- Enrollment Change – Overall enrollment increase anticipated (Elementary, Middle, and High)
- Increases based on continued development opportunities within the district and a COVID recovery
- District increases by nearly 1,100 students (+9.1%) (+1.7% to +2.1% a year)
- **Elementary increases by over 700 students (+12.6%) (+2.0% to +3.2% a year)**
- Middle School increases by nearly 200 students (+4.9%) (-1.1% to +2.1% a year)
- High School increases by over 200 students (+7.6%) (+0.8% to +3.2% a year)