

# **Prairie Ridge Band Resource Guide**



## **Trombone and Baritone**









Trombone

# Fingering Chart

Harmonic Series

	$\underline{\underline{b_2}}$ $\underline{\underline{\#_2}}$ $\underline{\underline{2}}$	$\underline{\underline{3}}$ $\underline{\underline{b_3}}$ $\underline{\underline{\#_3}}$	$\underline{\underline{4}}$ $\underline{\underline{b_4}}$ $\underline{\underline{\#_4}}$	$\underline{\underline{5}}$ $\underline{\underline{6}}$ $\underline{\underline{\#_6}}$	$\underline{\underline{7}}$
Bb8					
	1	2	3	4	5
Bb7					
	1	2	3	4	5
Bb6					
	1	2	3	4	5
Bb5					
	1	2	3	4	5
Bb4					
	1	2	3	4	5
Bb3					
	1	2	3	4	5
Bb2					
	1	2	3	4	5
F2					
	T1	T2	T3	T4	T5
Bb1					
	6	7	6	7	6
	$\underline{\underline{b_6}}$ $\underline{\underline{\#_6}}$	$\underline{\underline{7}}$	$\underline{\underline{b_7}}$ $\underline{\underline{\#_7}}$	$\underline{\underline{8}}$	$\underline{\underline{b_8}}$ $\underline{\underline{\#_8}}$

Euphonium

# Fingering Chart

Harmonic Series

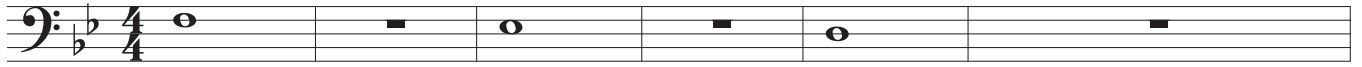
	$\underline{\underline{b_0}} \quad \underline{\underline{\#_0}}$	$\underline{\underline{0}}$	$\underline{\underline{b_1}} \quad \underline{\underline{\#_1}}$	$\underline{\underline{0}}$	$\underline{\underline{b_2}} \quad \underline{\underline{\#_2}}$	$\underline{\underline{0}}$	$\underline{\underline{b_3}} \quad \underline{\underline{\#_3}}$	$\underline{\underline{0}}$	$\underline{\underline{0}}$
Bb8		0	2	1	12	23	13	123	
Bb7		0	2	1	12	23	13	123	
Bb6		0	2	1	12	23	13	123	
Bb5		0	2	1	12	23	13	123	
Bb4		0	2	1	12	23	13	123	
Bb3		0	2	1	12	23	13 4	123 42	
Bb2		0	2	1	12	23	13 4	123 42	
F2		4	42	41	412	423	413	4123	
Bb1		0	2	1	12	23	13	123	

**This page intentionally left blank**

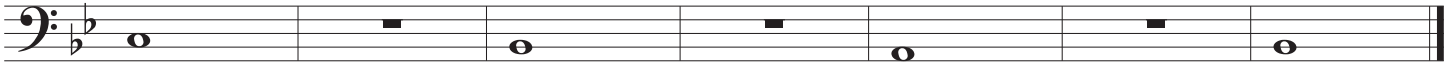


Trombone

# Long Tone Warm-Up



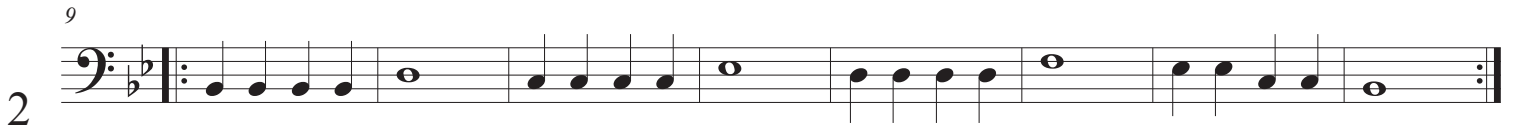
7




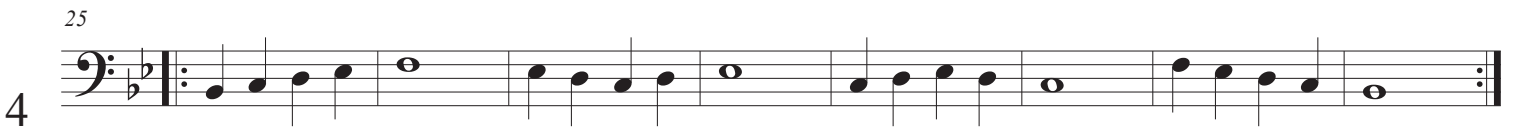
# Technique Builder Bb

Baritone (B.C.)

1 

2 <sup>9</sup> 

3 <sup>17</sup> 

4 <sup>25</sup> 

5 <sup>33</sup> 

6 <sup>41</sup> 

7 <sup>49</sup> 

8 <sup>53</sup> 

Technique Builder Bb

8 <sup>57</sup>

8

<sup>61</sup>

9

<sup>65</sup>

9

<sup>69</sup>

10

<sup>73</sup> Scale

10

<sup>76</sup> Arpeggio

Chords

10

<sup>81</sup>

10

<sup>87</sup>

10

# Technique Builder Eb

Trombone

1

9

17

25

33

41

49

53

57

8

61

65

9

69

73

10

Scale

76

Arpeggio

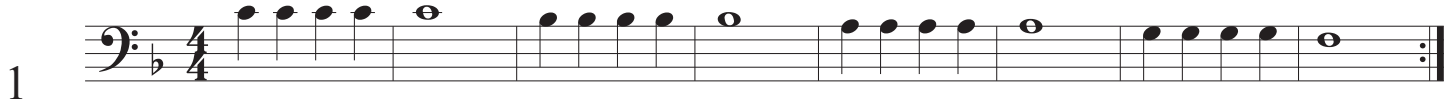
Chords

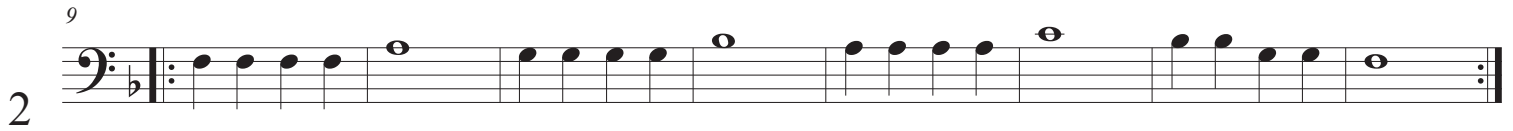
81

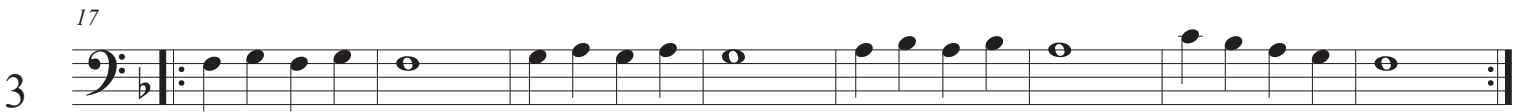
87

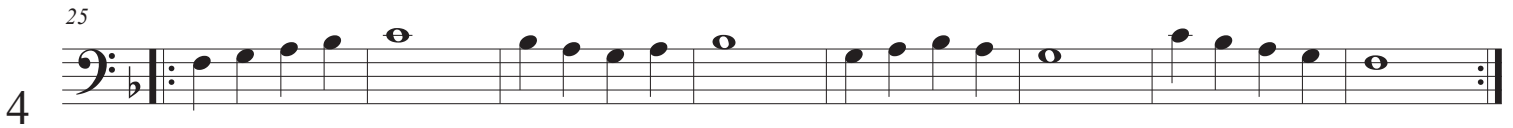
# Technique Builder F

Baritone (B.C.)

1 

2 

3 

4 

5 

6 

7 

8 

57

8

A single bass clef staff with a key signature of one flat (B-flat) and a common time signature. It contains four measures of music. The first measure starts with a repeat sign and a first ending bracket. The notes are: B2, A2, G2, F2, E2, D2, C2, B1. The second measure has notes: B2, A2, G2, F2, E2, D2, C2, B1. The third measure has notes: B2, A2, G2, F2, E2, D2, C2, B1. The fourth measure has notes: B2, A2, G2, F2, E2, D2, C2, B1.

61

A single bass clef staff with a key signature of one flat (B-flat) and a common time signature. It contains four measures of music. The first measure has notes: B2, A2, G2, F2, E2, D2, C2, B1. The second measure has notes: B2, A2, G2, F2, E2, D2, C2, B1. The third measure has notes: B2, A2, G2, F2, E2, D2, C2, B1. The fourth measure has notes: B2, A2, G2, F2, E2, D2, C2, B1.

65

9

A single bass clef staff with a key signature of one flat (B-flat) and a common time signature. It contains four measures of music. The first measure has notes: B2, A2, G2, F2, E2, D2, C2, B1. The second measure has notes: B2, A2, G2, F2, E2, D2, C2, B1. The third measure has notes: B2, A2, G2, F2, E2, D2, C2, B1. The fourth measure has notes: B2, A2, G2, F2, E2, D2, C2, B1.

69

A single bass clef staff with a key signature of one flat (B-flat) and a common time signature. It contains four measures of music. The first measure has notes: B2, A2, G2, F2, E2, D2, C2, B1. The second measure has notes: B2, A2, G2, F2, E2, D2, C2, B1. The third measure has notes: B2, A2, G2, F2, E2, D2, C2, B1. The fourth measure has notes: B2, A2, G2, F2, E2, D2, C2, B1.

73

10

Scale

A single bass clef staff with a key signature of one flat (B-flat) and a common time signature. It contains three measures of music. The first measure has notes: B2, A2, G2, F2, E2, D2, C2, B1. The second measure has notes: B2, A2, G2, F2, E2, D2, C2, B1. The third measure has notes: B2, A2, G2, F2, E2, D2, C2, B1.

76

Arpeggio

Chords

A single bass clef staff with a key signature of one flat (B-flat) and a common time signature. It contains three measures of music. The first measure has notes: B2, A2, G2, F2, E2, D2, C2, B1. The second measure has notes: B2, A2, G2, F2, E2, D2, C2, B1. The third measure has notes: B2, A2, G2, F2, E2, D2, C2, B1.

81

A single bass clef staff with a key signature of one flat (B-flat) and a common time signature. It contains four measures of music. The first measure has notes: B2, A2, G2, F2, E2, D2, C2, B1. The second measure has notes: B2, A2, G2, F2, E2, D2, C2, B1. The third measure has notes: B2, A2, G2, F2, E2, D2, C2, B1. The fourth measure has notes: B2, A2, G2, F2, E2, D2, C2, B1.

85

A single bass clef staff with a key signature of one flat (B-flat) and a common time signature. It contains four measures of music. The first measure has notes: B2, A2, G2, F2, E2, D2, C2, B1. The second measure has notes: B2, A2, G2, F2, E2, D2, C2, B1. The third measure has notes: B2, A2, G2, F2, E2, D2, C2, B1. The fourth measure has notes: B2, A2, G2, F2, E2, D2, C2, B1.







# Tone Calisthenics

long tones and lip slurs

Trombone

A

Exercise A consists of two staves of music in bass clef, 2/4 time, with a key signature of two flats. The first staff contains four measures of music, each with a long tone followed by a lip slur. The second staff contains four measures of music, each with a long tone followed by a lip slur.

B

Exercise B consists of two staves of music in bass clef, 2/4 time, with a key signature of two flats. The first staff contains four measures of music, each with a long tone followed by a lip slur. The second staff contains four measures of music, each with a long tone followed by a lip slur.

C

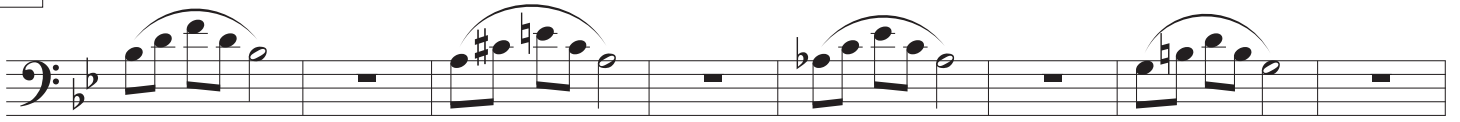
Exercise C consists of two staves of music in bass clef, 2/4 time, with a key signature of two flats. The first staff contains four measures of music, each with a long tone followed by a lip slur. The second staff contains four measures of music, each with a long tone followed by a lip slur.

D

Exercise D consists of two staves of music in bass clef, 2/4 time, with a key signature of two flats. The first staff contains four measures of music, each with a long tone followed by a lip slur. The second staff contains four measures of music, each with a long tone followed by a lip slur.

2  
E

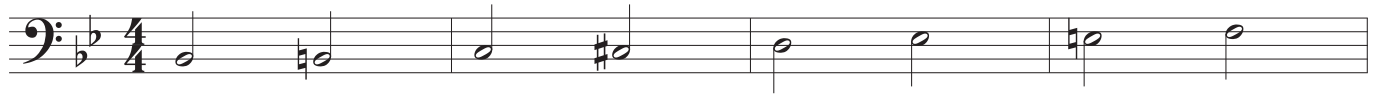
Tone Calisthenics 2013



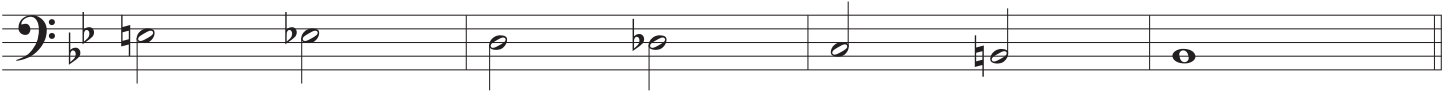
# Chromatic Scale Exercises

Trombone  
Baritone B.C.  
Bassoon

## Do-Sol



5



## Full Range

9



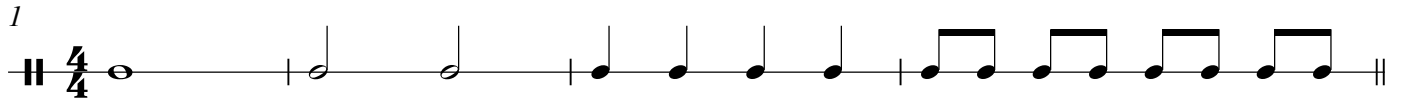
13



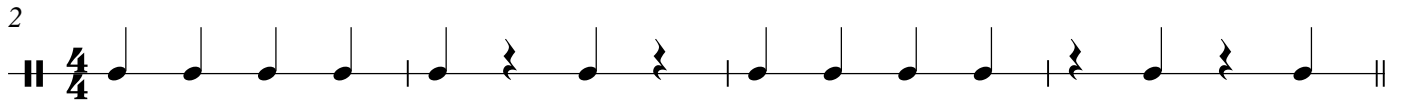
**This page intentionally left blank**

# PR 6th Grade Spring 18-Week Rhythm Review

1



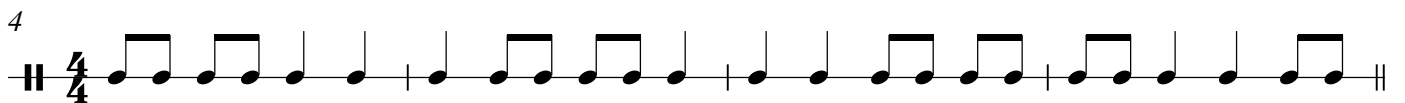
2



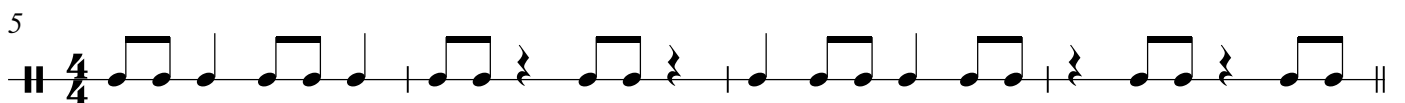
3



4



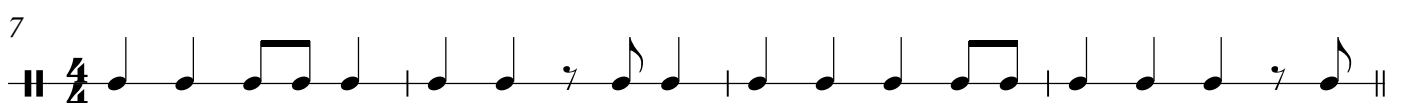
5




6



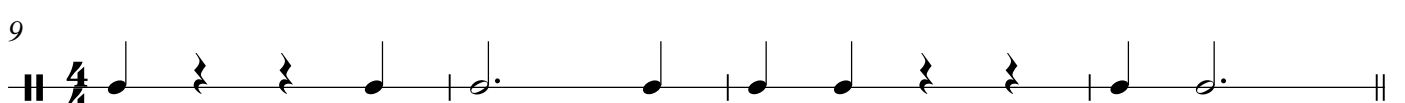
7



8

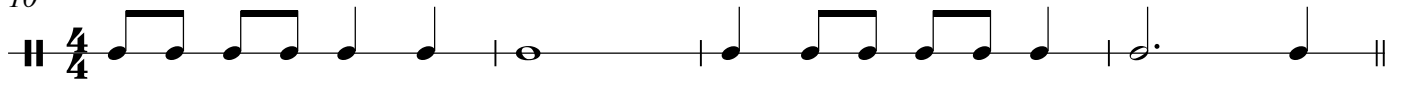


9



2

10



11



12



13



14

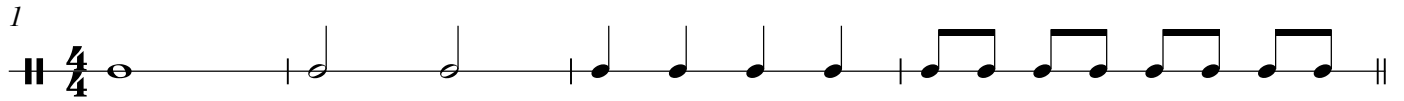


15

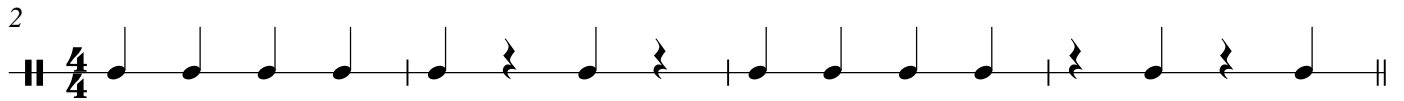


# PR 7th Grade Spring 18-Week Rhythm Review

1



2



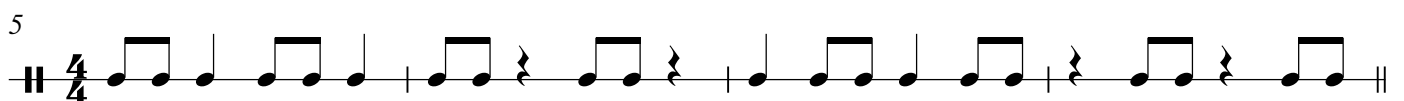
3



4



5



6



7



8



9







**This page intentionally left blank**

Trombone Baritone

# Star Spangled Banner

John Philip Sousa

Moderato ♩ = 108

7

1. 2.

*f* *p* *p* *mf* *f* *ff*

Oh, say can you see by the dawn's early light  
What so proudly we hailed at the twilight's last gleaming?  
Whose broad stripes and bright stars thru the perilous fight,  
O'er the ramparts we watched were so gallantly streaming?  
And the rocket's red glare, the bombs bursting in air,  
Gave proof through the night that our flag was still there.  
Oh, say does that star-spangled banner yet wave  
O'er the land of the free and the home of the brave?